



PANTO

We were lucky enough to enjoy another fantastic performance from M&M Productions this morning! We loved 'The Railway Children' and already can't wait for our next panto in the Spring Term.



MUSIC ALIVE

Thank you to the Music Service for performing their amazing 'Music Alive' concert for us this afternoon. The children thoroughly enjoyed it, we even had a dance at the end!



SPORTS DAY

Sports Day is **Tuesday 16th June**, Key Stage 1 will be in the morning and Key Stage 2 will be in the afternoon. Times TBC.



BRASS CONCERT

Our Year 4 and 5 Brass Concert is **Wednesday 8th July @ 2:15pm** in the school hall. We hope to see you there!



WELCOME TO THE WORLD

Huge congratulations to our lovely Miss Whittaker and her partner Sam on the birth of their beautiful baby boy, Myles, on Sunday. Mum and baby are both doing well. We can't wait to meet him!



PLEASE MAKE SURE YOUR ARBOR NOTIFICATIONS ARE SWITCHED ON TO AVOID MISSING ANY MESSAGES FROM US.

IF YOUR CHILD IS IN YEAR 4 OR 5, PLEASE MAKE SURE THEY HAVE THEIR MUSICAL INSTRUMENT IN SCHOOL EVERY WEDNESDAY.

TIME TO TALK

How can we protect the oceans?

ATTENDANCE

Regular attendance at school is crucial if children are to achieve the best outcomes possible. Please ensure your child attends school every day or you may be given a fixed penalty notice.

Best attending classes week ending **22/05/26:**
EY/KS1—Robin 96.3%
KS2—Owl 100%



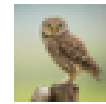
KEY DATES FOR YOUR DIARY

16.06.26: SPORTS DAY
23.06.26: Y5/6 Town Sports Event
24.06.26: KS1 Visit St. Anne's Beach
25.06.26: Y3/4 Town Sports Event
08.07.26: Year 4 & 5 Brass Concert





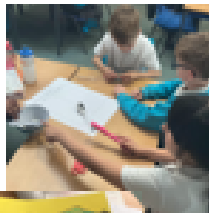
Owls Newsletter



Science

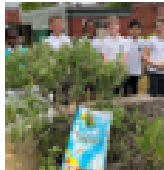
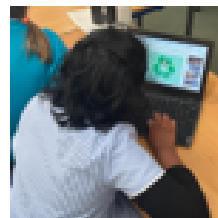


We have been learning all about magnets and forces. We investigated which materials were magnetic, explored different types of magnets and even created our own magnetic games.



Geography

In Geography, we explored different Biomes and tried to locate areas around school with similar features.



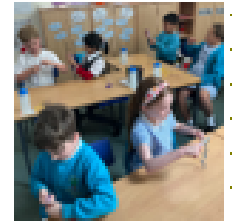
Music

We have been learning a traditional Māori song from New Zealand which we will perform at a Gala concert later in the year. We also had a go at learning the Haka dance in PE.



English

Our story last term was One Plastic Bag. This showed us how important it is to take care of the environment and recycle plastic so that we can reduce the impact on oceans and sea animals. It also inspired us to crochet!



PSHE

In PSHE we have been working hard on our Enterprise projects. In groups, the children have come up with their own business plan and products to sell.



The date for our Enterprise afternoon will be posted on Dojo and there will be a notice on the classroom door. Keep your eyes peeled!